

R3DP 2016

Expert Working Group
June 29th , 2015

Agenda

1. Product Design
2. Combinations
3. Submetering @ ELIA-grid

Agenda

1. Product Design
2. Combinations
3. Submetering @ ELIA-grid

R3 Dynamic Profile



Context

- Product design presented in TF balancing (March & April)
 - **Monthly product**
 - **New bidding obligations**
- Balancing rules and Dossier Volumes in consultation (consultation until 6/07)
- New tendering process – general framework (consultation finished 23/06)

R3 Dynamic Profile - Product Design

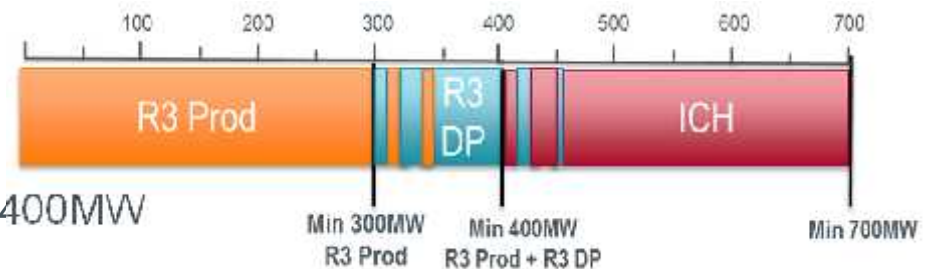
1. Yearly and monthly sourcing
2. Number of activation
3. Pool Management
4. Activation
5. Bidding obligations

R3 Dynamic Profile - Product Design

1. Yearly and monthly sourcing

- The quantity of R3 DP is the result of the Long Term and Short Term procurement
- Volumes split between Long Term and Short Term is defined in the Balancing Rules

- Volume R3 LT : minimum 700MW
- Volume R3 Prod LT : minimum 300MW
- Volume R3 Prod + R3 DP LT : minimum 400MW
- Volume ICH : maximum 300MW
- Volume R3 ST : minimum 70MW



- No constraint regarding the number of providers / volumes
- Monthly tendering via **STAR**. Trainings will be organized end of the year.

R3 Dynamic Profile - Product Design

2. Number of activation

- Max 40 activations per year + Max 8 activations per month
- Each activation of R3 DP will be considered as one activation → yearly and monthly counters increase

R3 DP Obligation

	Yearly counter < 40	Yearly counter = 40
Monthly counter < 8	(LT + ST) volume contracted	ST volume contracted
Monthly counter = 8	LT volume contracted	0MW

R3 Dynamic Profile - Product Design

3. Pool Management

- One list of Delivery Points. Access points, prequalified, will be allowed to provide yearly and monthly volumes
- Possibility to review the list of DP each month

4. Activation

- ELIA may activate **partially** or entirely the R3 DP contracted volume (= R3 DP Activated)
- During one single activation, ELIA can **change the quantity** of R3 DP Activated on a Qh-basis.
- The Supplier is free to choose on which Delivery Points he performs the activation.
- No remuneration
- Activation check on all Delivery Points

R3 Dynamic Profile - Product Design



5. Bidding obligations

- Obligation 1 – Smallest offered volume: The smallest offered volume should not exceed following volumes:
 - For Long Term tenders: 50MW
 - For Short Term tenders: 10MW
 - Capacity Bids for a smaller volume are allowed and encouraged!

- Obligation 2 – Volume Granularity: When sorting the Capacity Bids in terms of offered volume, the difference between 2 Capacity Bids can be maximum (maximum delta between 2 Capacity Bids):
 - For Long Term tenders: 50MW
 - For Short Term tenders: 10MW

- Obligation 3 – Base offer available: When offering both in Peak and Long Offpeak, the Supplier must submit a BASE Capacity Bid, while respecting the obligations below, for a volume that is the least minimum of the maximum volume offered in Peak and the maximum volume offered in Long Offpeak.

- Obligation 4 – Total cost check: For all Base Capacity Bids: The total cost (unit price * volume) of the smallest volume that can be retained resulting from a Capacity Bid, should never exceed the total cost of the smallest volume that can be retained from a Capacity Bid with a larger offered volume.

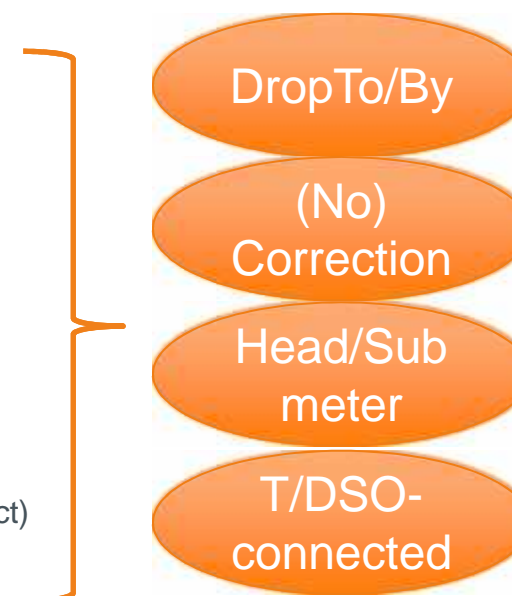
Agenda

1. Product Design
 2. Combinations
 3. Submetering @ ELIA-grid
-

Available Flex products

Recap 2015:

- **R3DP = DROP BY** product with **No Correction** (BRP remunerated via Pimb+)
- **ICH = DROP TO** product with **Correction** (neutralization with Nomination)
- ICH and R3DP mutually exclusive products
- **SDR DROP BY/TO** at **TSO-level** with **Correction** using Nomination at **Headmeter**
- **SDR DROP BY/TO** at **TSO-level** with **No Correction** using Baseline at **Submeter**
- **SDR DROP BY** at **DSO-level** with **No Correction** using Baseline (Headmeter only product)



NEW in 2016:

- **R3DP at T/DSO-level with Submeter**

	R3DP TSO		R3DP DSO		SDR TSO		SDR DSO	ICH TSO
	HeadMeter	Submeter	HeadMeter	Submeter	HeadMeter	Submeter	HeadMeter	HeadMeter
Correc tion					X Nomination			X Nomination
No Correction	X (last qh)	X (last qh)	X (last qh)	X (last qh)		X Baseline	X Baseline	
Drop TO					X	X		X
Drop BY	X	X	X	X	X	X	X	
	R1 load				R1 load			R1 load

Guiding principles

- No combo **between Head- and Submeter** to avoid bias in volume calculation

- No combo **between DROP BY and DROP TO** (R3DP & ICH) as UM versus SL

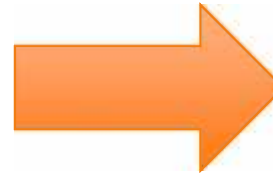
- No combo **between Correction and No Correction** (eg. SDR at HM and R3DP at HM) as No Correction (R3DP) is waved by Correction (SDR DropBy)

- No combo **between Baseline (for SDR) and Last QH (for R3DP)** as adding additional complexity in control and settlement
 - Eg. activation of R3 DP can impact baseline calculation (=adjustment of baseline D-1 based on last 3 hours...). Quid if R3 DP activated in the previous 3 hours?
 - need to adapt baseline calculation... not desirable

Conclusions combo R3DP-SDR in 2016

→ No combination allowed in 2016 on one single

- Access Point for Flexibility @ DNO
- Delivery Point @ELIA



- 1 Service* per DP/APF

Rationale:

- Facilitating submetering will allow providers to isolate flexibility on different processes, thereby reducing wipe out –effect at Headmeter.
- Only on processes where both R3DP and SDR flex is concentrated, there is an issue for Jan-Mar 2016 and Nov-Dec 2016 period.
- However, via monthly tendering, providers can still partake to R3DP on top of SDR.

* : *excluding R1-load: delivery possible with R3DP, ICH and SDR at Headmeter @ ELIA-grid*

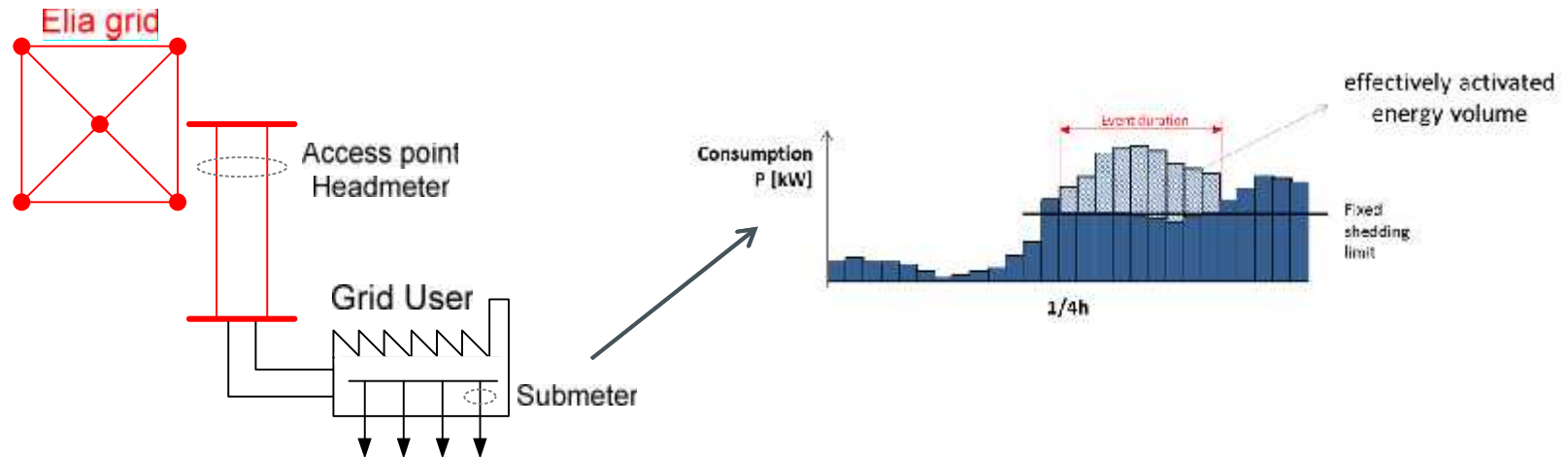
Agenda

1. Product Design
2. Combinations
3. Submetering @ ELIA-grid

Submetering

Introduction

- Submetering allows to monitor specific energy flows **behind the headmeter**

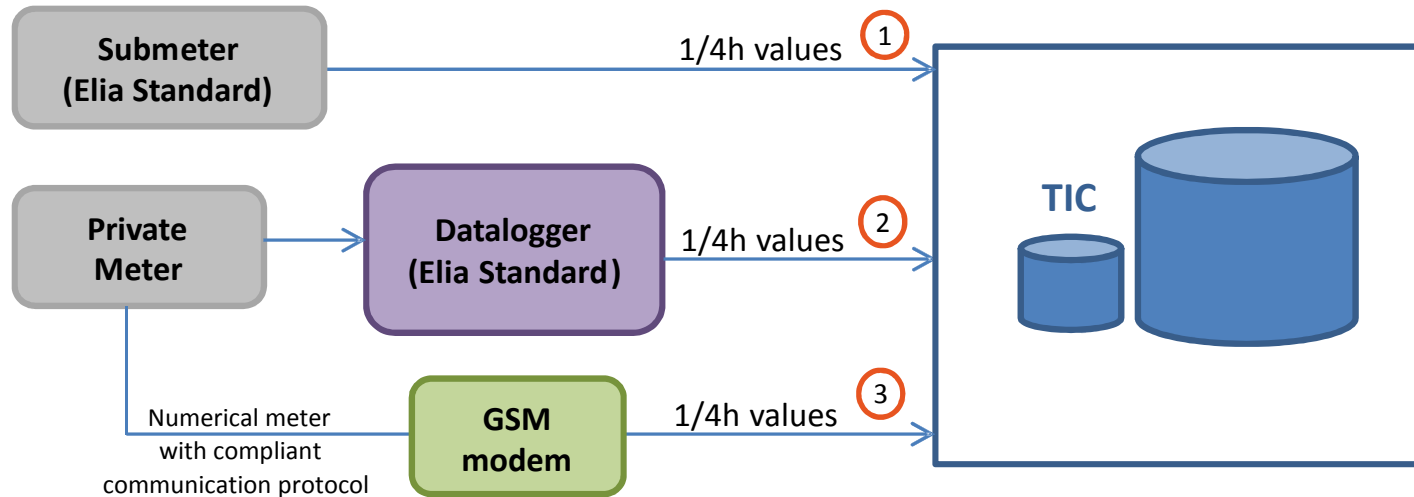


- Advantages

For the Grid User	Improves the accuracy of the determination of activated flexibility service/volumes (in case of activation is not accurately reflected in the global offtake)
	Allows diversification in offered flexibility services at one customer site
For Elia	Provides extra liquidity in flexibility service/volumes

Submetering solutions

Overview



	Option 1	Option 2	Option 3
TI	Private	Private	Private
TP	Private	Private	Private
Meter	Standard Elia	Private	Private
Datalogger	n.a.	Standard Elia	(Private)
GSM modem	included in the cubicle Elia	included in the cubicle Elia	Standard Elia



- **Ownership** of the meter (allow private meter)
- **Authenticity** of transferred meter data

Submetering solutions

Technical Requirements

- About headmetering facilities

The minimum technical requirements are :

- Accuracy class of current transformers (CT) : 0.2S
- Accuracy class of voltage transformers (VT) : 0.2
- Accuracy class of the meter for active energy : 0.2S

- About submetering facilities

- ✓ For new installations, required accuracy class based on technical regulation

Aansluitings- vermogen	Spanningsniveau waarop de meetinrichting aangesloten is	Minimaal vereiste nauwkeurigheidsklasse van de onderdelen in de meetinrichting			
		TP	TI	Wh- meter	VArh- meter
≥ 5 MVA	HS	0.2	0.2	0.2	A
≥ 1 MVA tot 5 MVA	HS	0.2	0.2	C	A
≥ 250 kVA tot 1 MVA	HS	0.5	0.5	B	A
	LS(uitzonderlijk)	nvt	0.5	B	A
≥ 100 kVA tot 250 kVA	HS	0.5	0.5	B	A
	LS	nvt	0.5	B	A
< 100 kVA	LS zonder TI	nvt	nvt	A	A

C = 0,5%
B = 1%
A = 2%

- ✓ For existing installations, current accuracy is accepted (till upgrade)

See document 'General Technical Specifications' published on the Elia website

How to get a submetering offer ?



* Technical information depending on the submetering option
 + single line scheme
 + acces map (location of the meter)

- Standard offer - price (excl. VAT)

Option 1	Submeter Elia	3370 et 8010 €**
Option 2	Datalogger	2380 €
Option 3	Modem GSM	1280 €

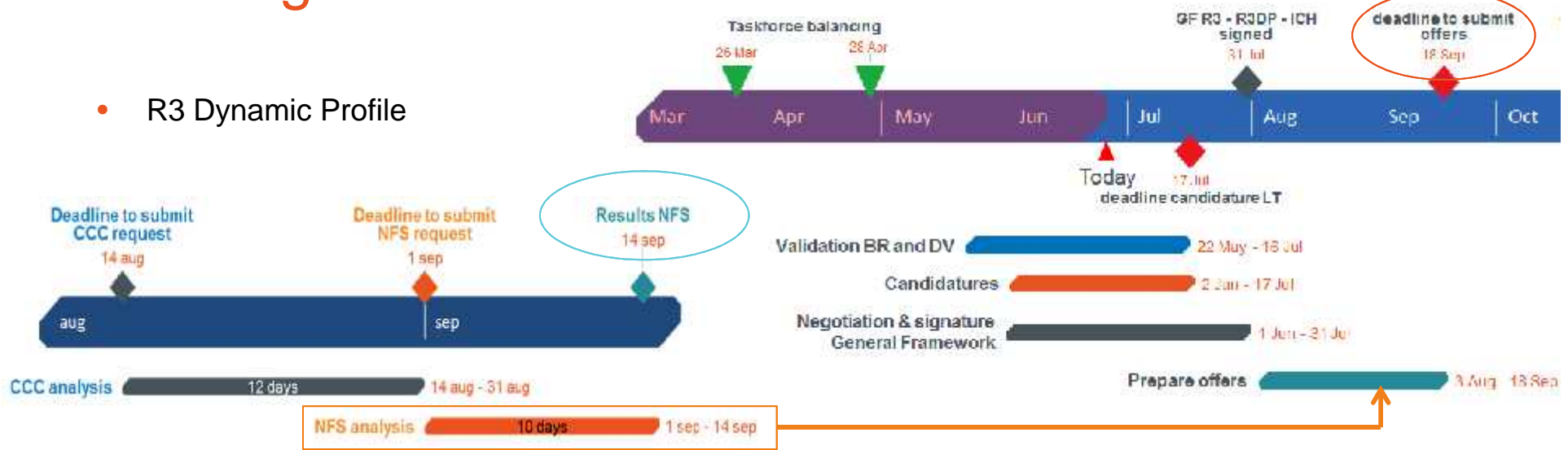
** Depending on the accuracy class for A+/A-

- The price includes the purchase, the delivery on site (excluding installation) and the commissioning of the equipments.

Planning



- R3 Dynamic Profile



- Delivery points with submetering



- Max. number of commissioning prior to 1/1/2016 ('First In first served' rule)
- Max. delay between order reception and commissioning
- Max. number of commissioning "acceptable" per month



Thank you !
