

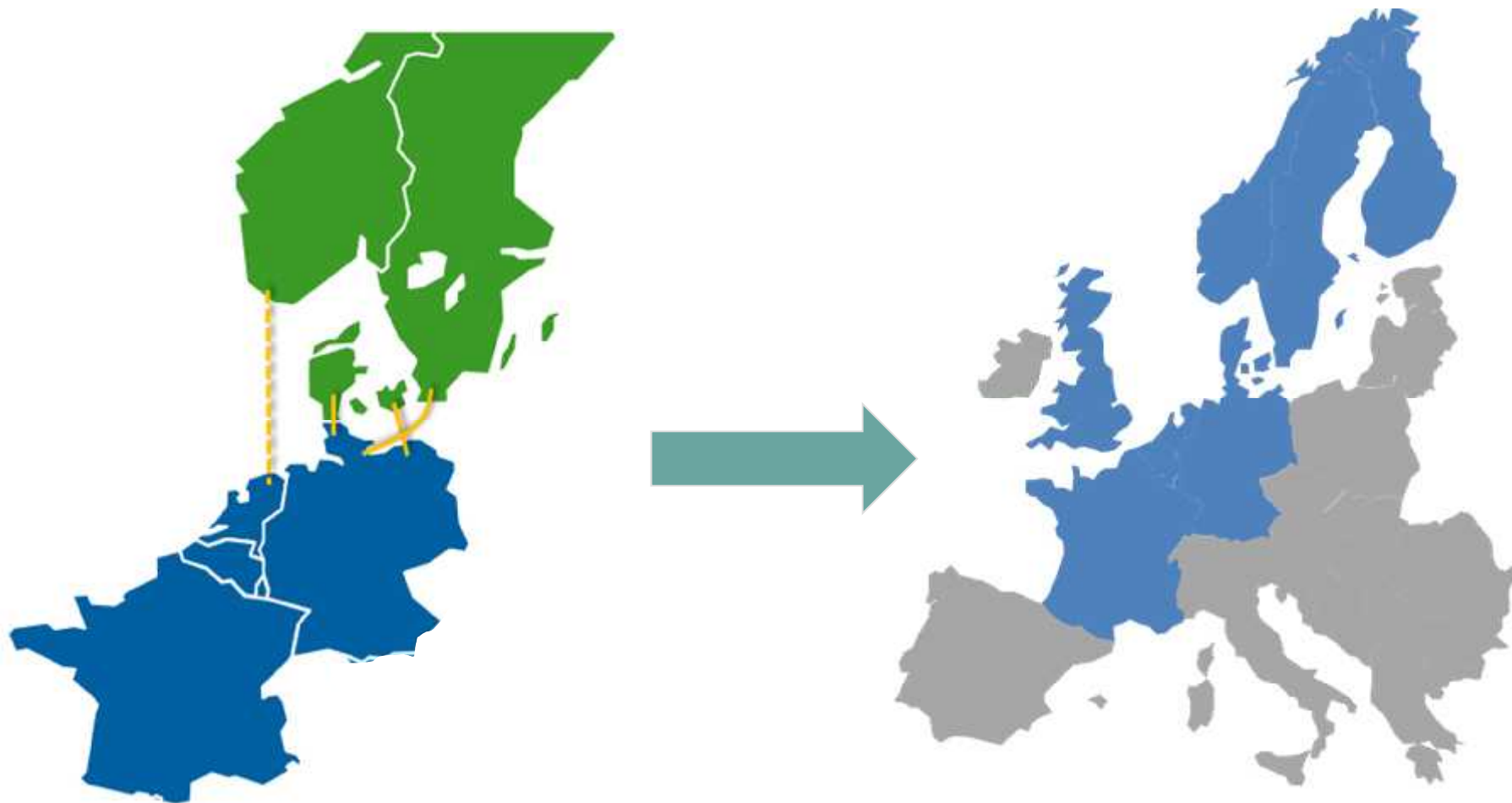


Status NWE Day-Ahead Project

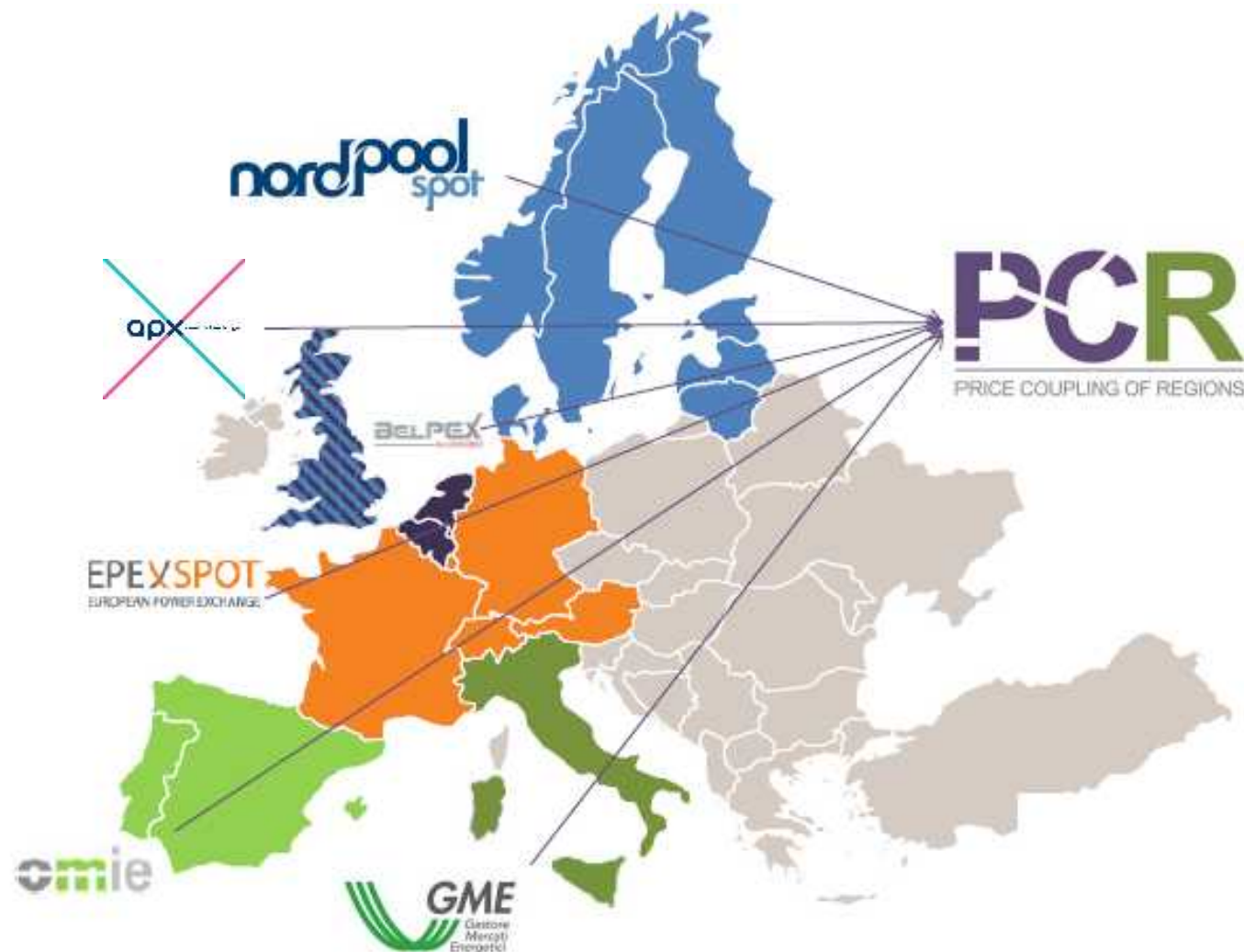
European Market Design Working Group
March 15th 2013



From CWE MC & CWE-Nordic ITVC ... towards NWE DA price coupling

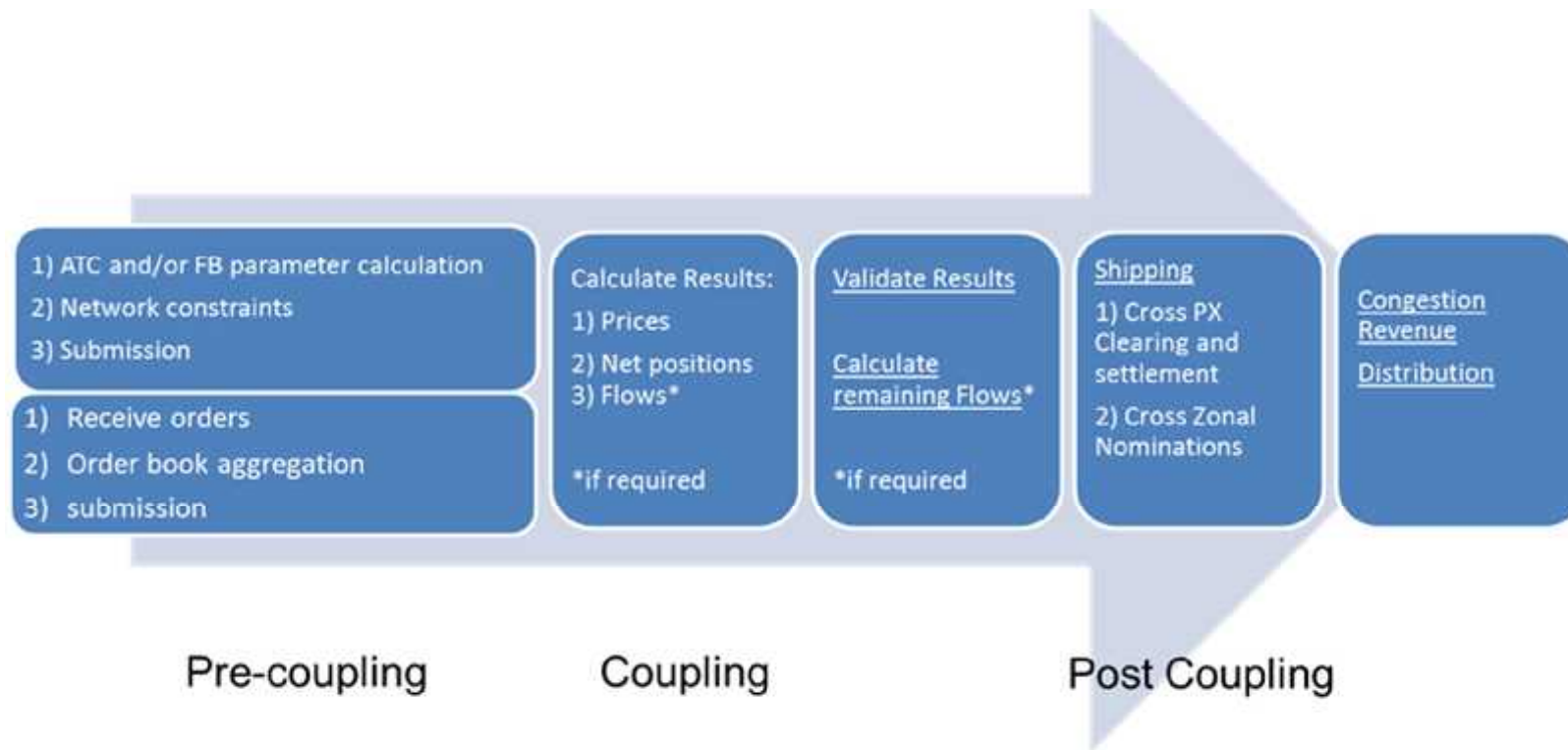


PCR = Price Coupling of Regions

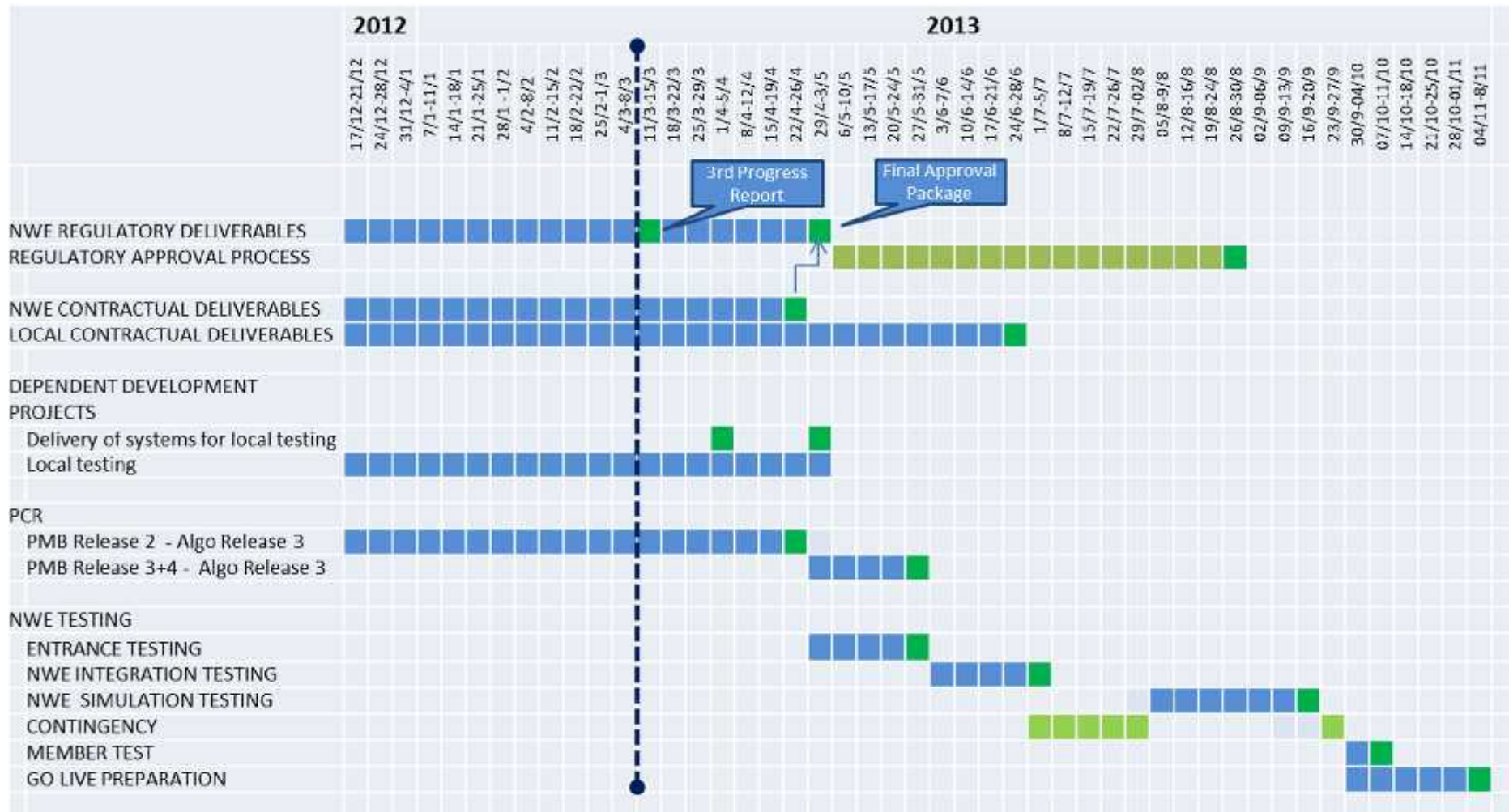


Development of a single price coupling algorithm, Euphemia. It will be used to calculate electricity prices across Europe. It will also optimise the overall welfare and increase transparency of prices and flows

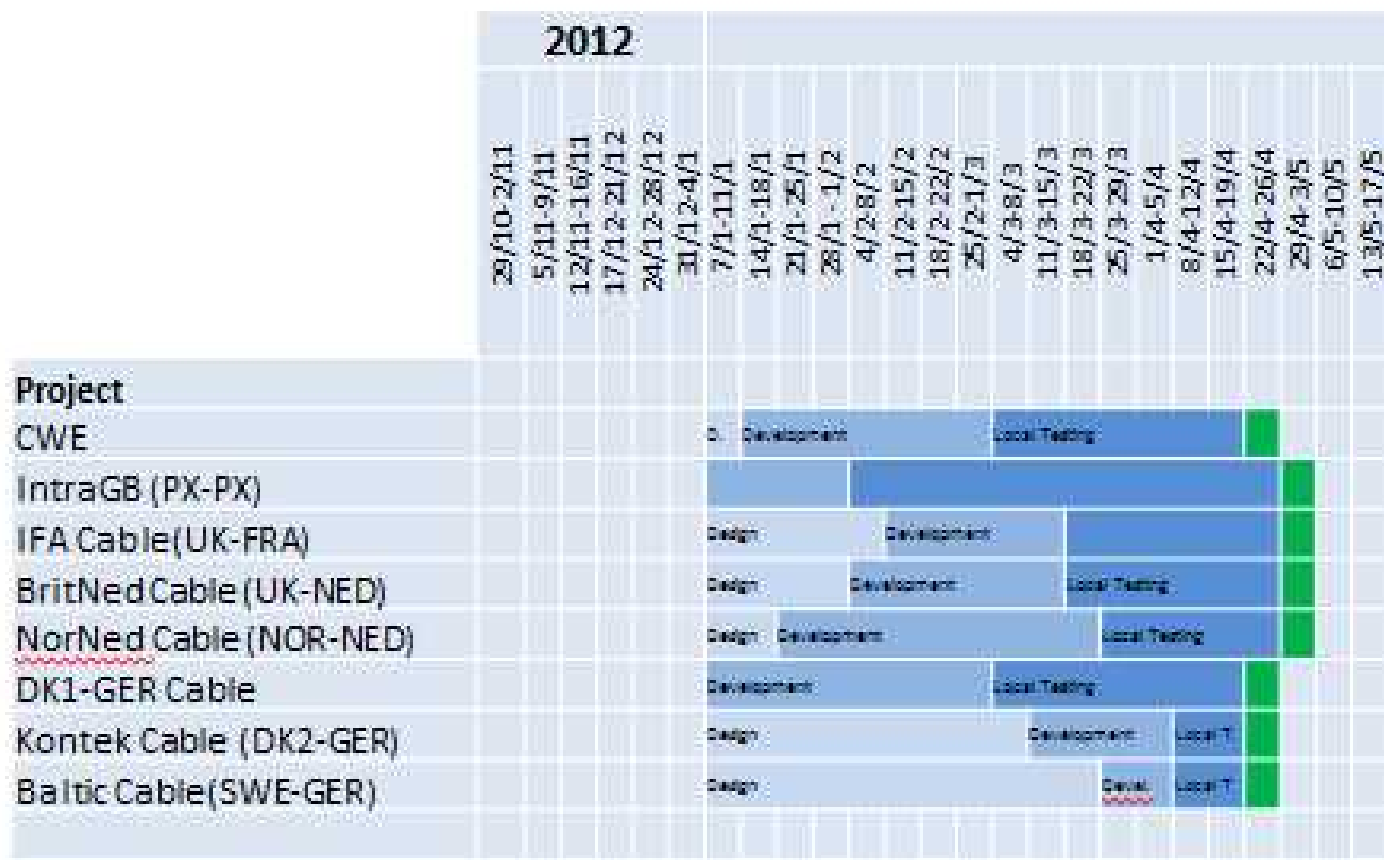
NWE High Level Architecture



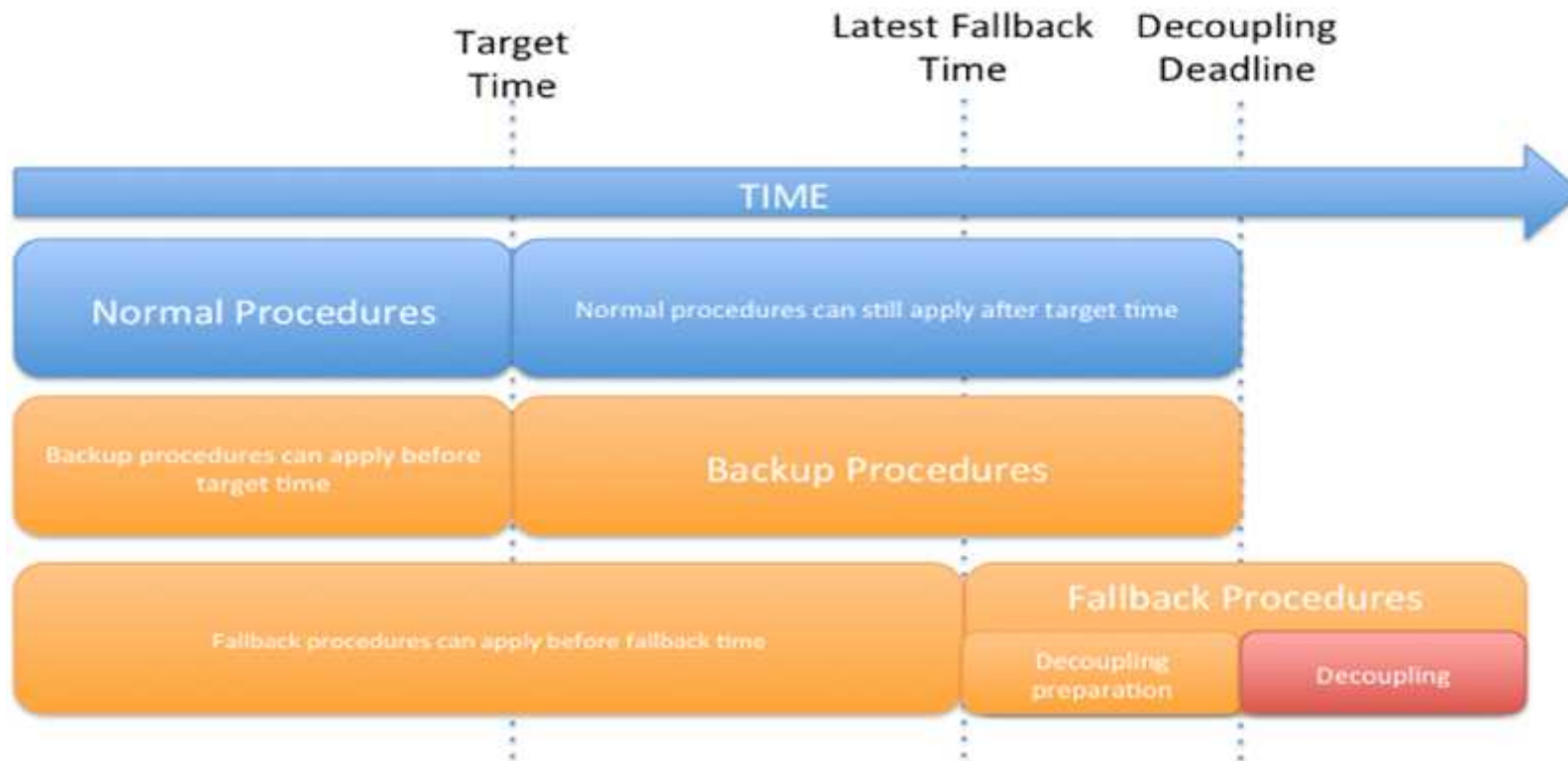
NWE DA – Planning Overview



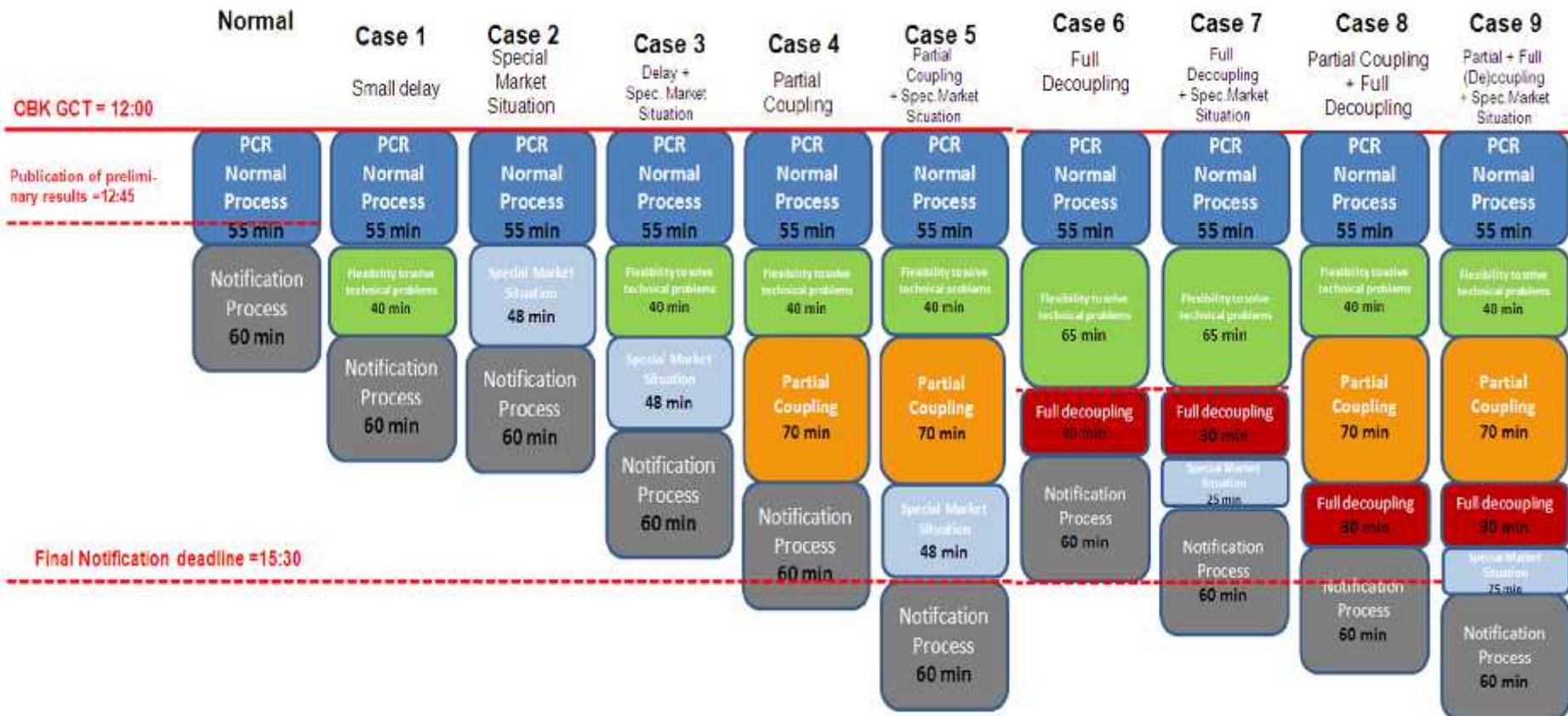
NWE DA – Planning Overview



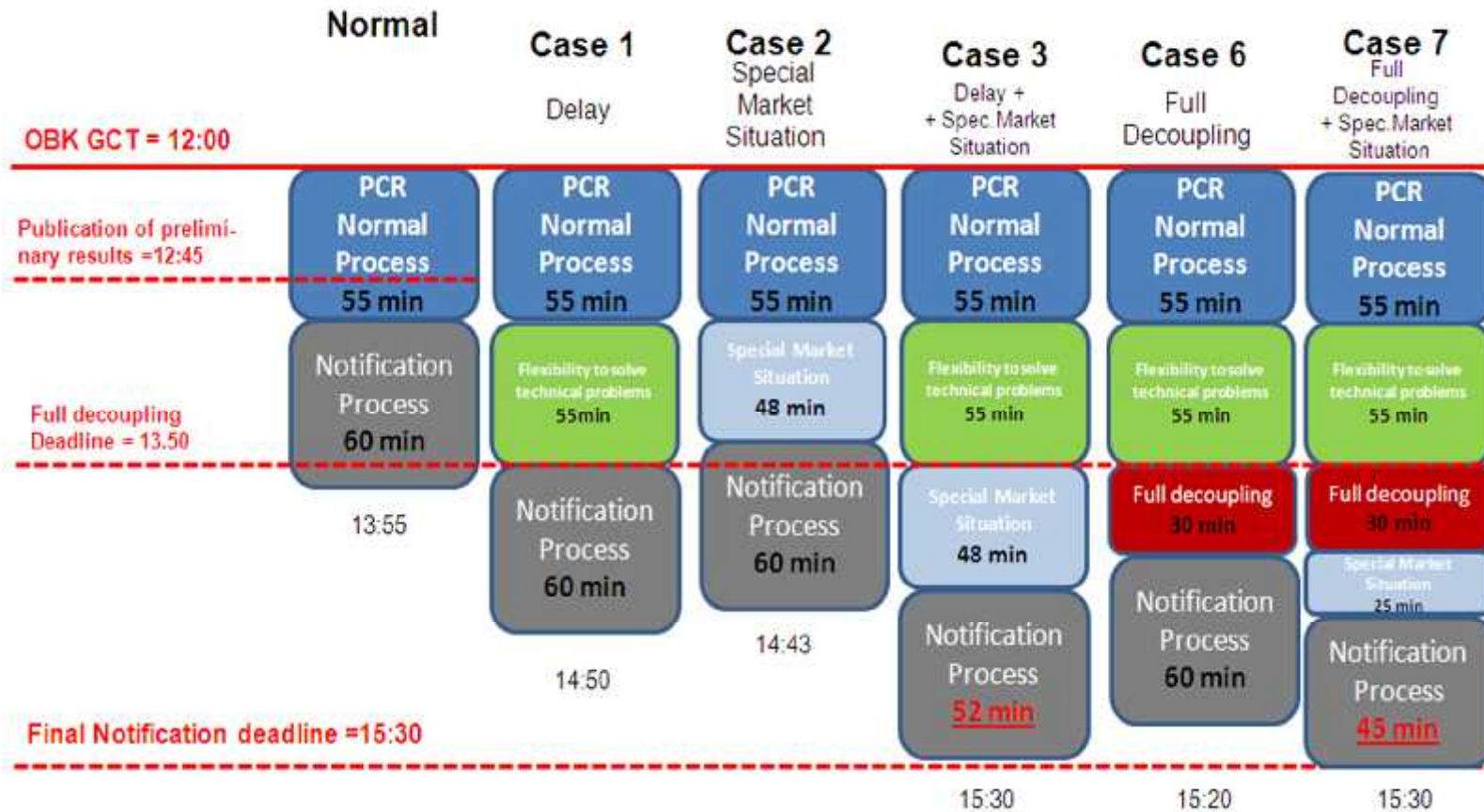
NWE procedures



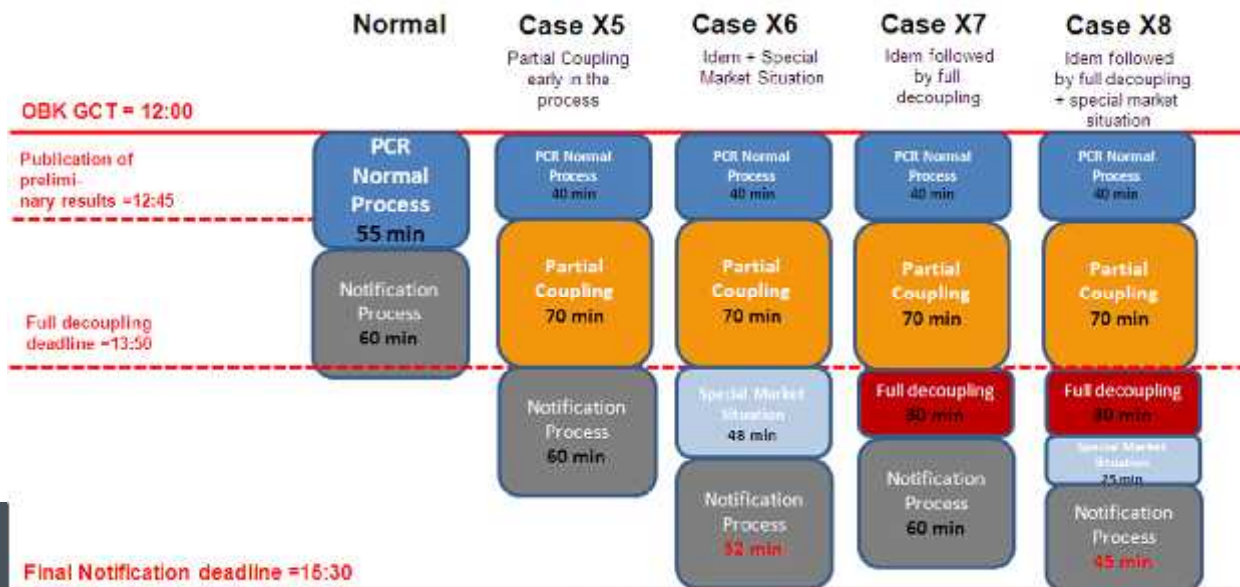
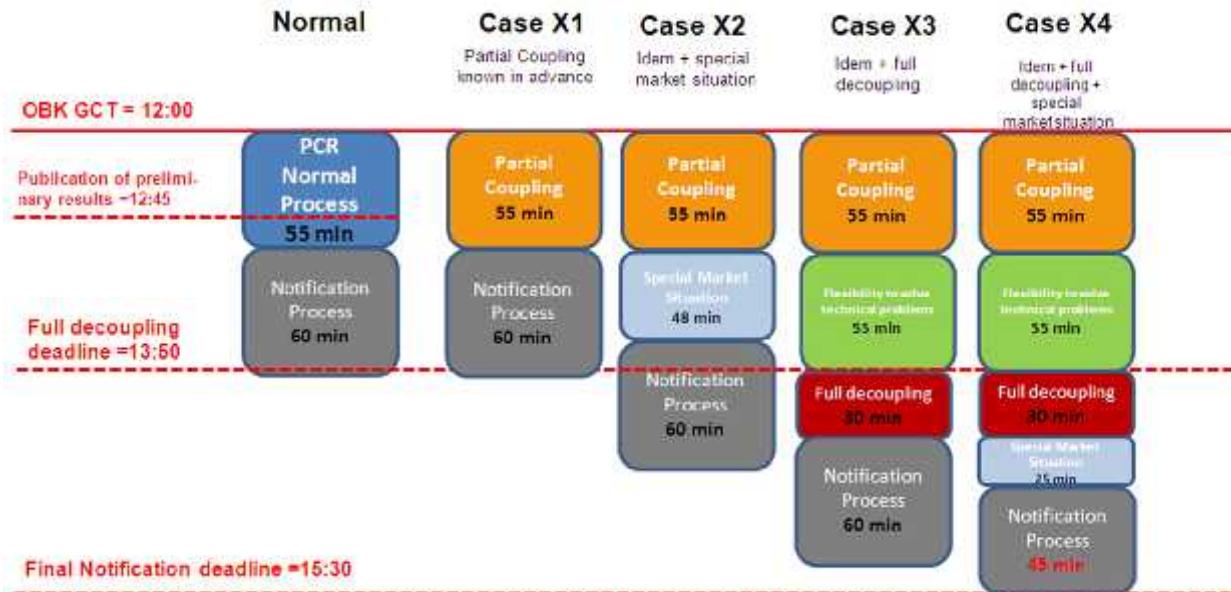
NWE procedures



NWE procedures



NWE procedures



NWE DA - Procedures



Market participant consultation paper : NWE Price Coupling Project would like to know the opinion of the market participants.

The questions are related to:

1. The foreseen timings of the NWE operational processes **at** NWE go-live
2. Possible changes in process timings **after** NWE go-live
3. Harmonization of price boundaries in NWE – questions received from the NRA's.



Deadline : March 15th



NWE DA - Rollback



What ?

Roll back is defined as the switch back from the NWE price coupling infrastructure to the current

- CWE
- Nordic-Baltic
- ITVC
- GB

Infrastructure.

Period ?

there is a 2 months period for possible activation of the rollback

In case of activation : for a maximum of 6 months

--> a Roll back task force established

NWE DA - Communication

