



Status CWE Flow-Based Project

European Market Design Working Group
March 15th 2013



Agenda

Status of FB Project

FB Project Planning

External Parallel Run - Data Publication

First aggregated results

Next Steps

Status of FB Project

2012

Methodology

- Intuitiveness Report published ([link](#))
- Agreement on CB selection principles
- Finalization of FRM values
- New GSK implementations by some TSOs

Process

- Organization of knowledge transfer
- Coordination of common activities

Tooling

- Supporting the methodology by IT tools

2013

Methodology

- Formal NRA approval
- Adjustment of the CB sets and reporting to NRAs
- Methodology refinement

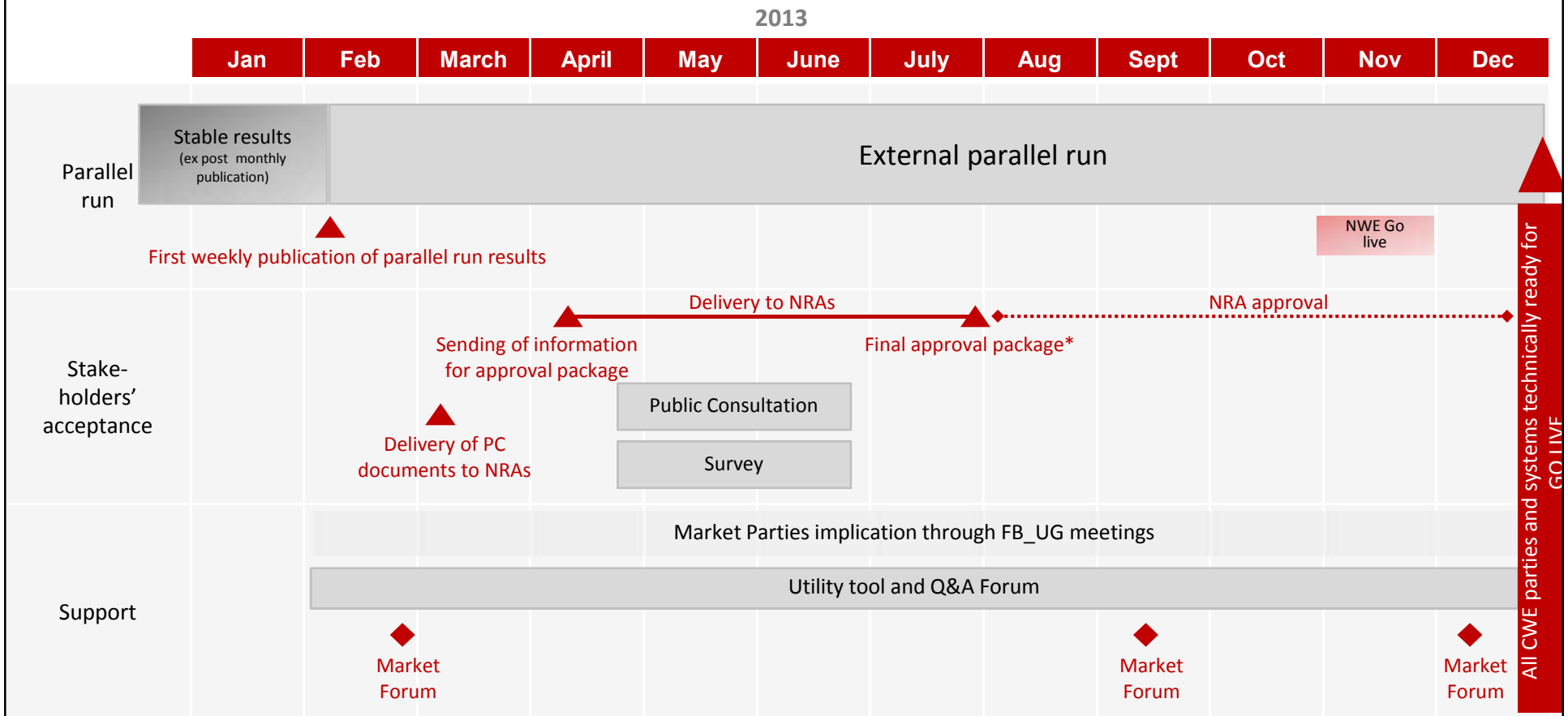
Process

- Continuous improvement of coordination activities

Tooling

- Implementation of an industrialized IT tool

FB Project Plannig



* Including answers to public consultation's outputs

External Parallel Run

Data Publication

Parallel Run Results based on:

- FB parameters daily produced in parallel to ATC by TSOs.
- Real order books of the operational ATC market coupling.
- Weekly market results simulations and publications

<http://www.casc.eu/en/Resource-center/CWE-Flow-Based-MC/General-Information>

- FTP server with weekly publications (user: CWE_MC_FB, password: CAn2Buse)
- “Utility Tool” with the daily available FB capacities
- Q&A web-forum to answer Market Parties questions
- Slides of the Market Forum (07/03)

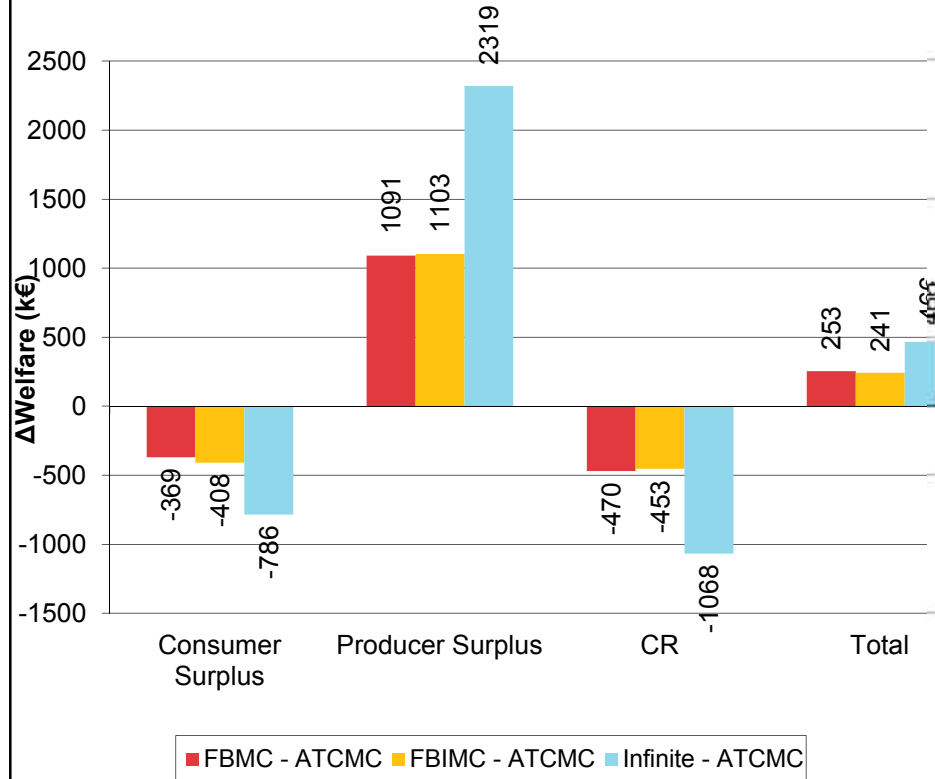
FIRST AGGREGATED RESULTS

Considered period:

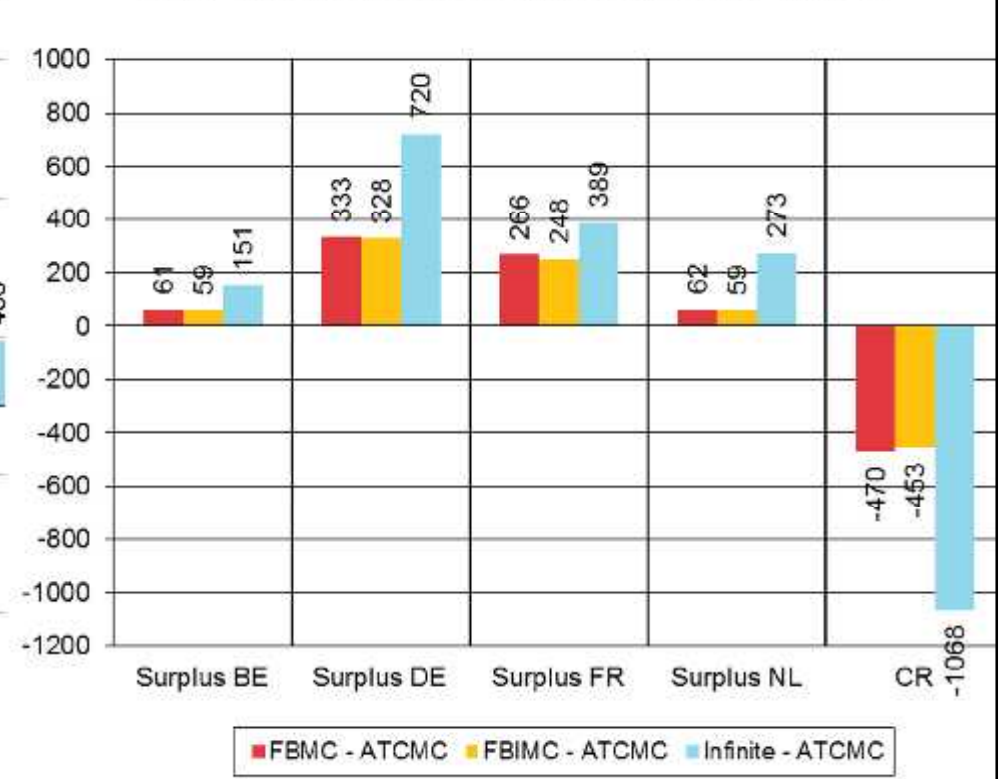
« Project week »	Wed	Thu	Fri	Sat	Sun	Mon	Tue
0							01 Jan
1	02 Jan	03 Jan	04 Jan	05 Jan	06 Jan	07 Jan	08 Jan
2	09 Jan	10 Jan	11 Jan	12 Jan	13 Jan	14 Jan	15 Jan
3	16 Jan	17 Jan	18 Jan	19 Jan	20 Jan	21 Jan	22 Jan
4	23 Jan	24 Jan	25 Jan	26 Jan	27 Jan	28 Jan	29 Jan
5	30 Jan	31 Jan	01 Feb	02 Feb	03 Feb	04 Feb	05 Feb
6	06 Feb	07 Feb	08 Feb	09 Feb	10 Feb	11 Feb	12 Feb
7	13 Feb	14 Feb	15 Feb	16 Feb	17 Feb	18 Feb	19 Feb
8	20 Feb	21 Feb	22 Feb	23 Feb	24 Feb	25 Feb	26 Feb
9	27 Feb	28 Feb	01 Mar	02 Mar	03 Mar	04 Mar	05 Mar

AVERAGE DAY AHEAD MARKET WELFARE

Daily average welfare difference (relative to ATC)

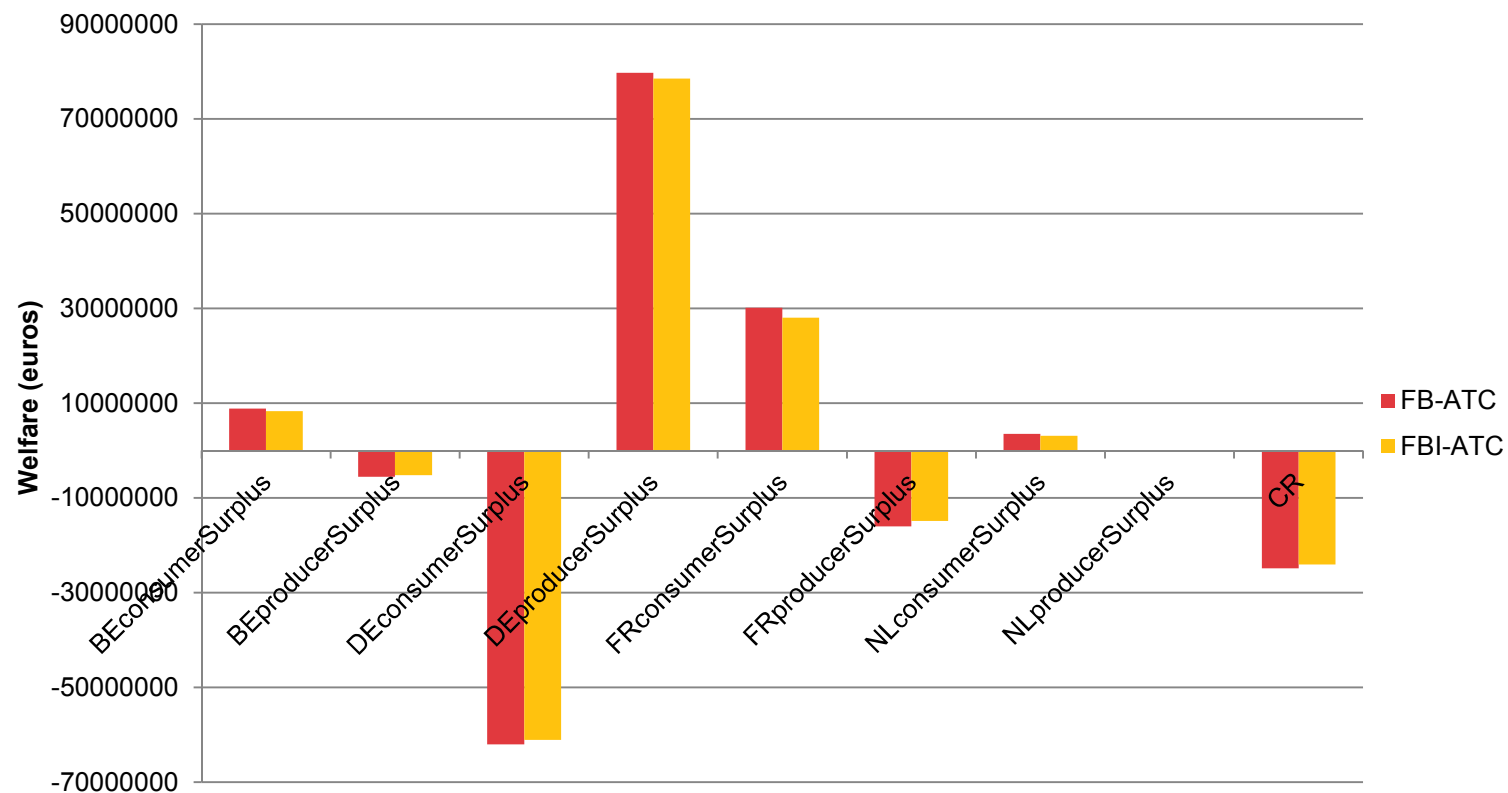


Daily average welfare difference (relative to ATC)

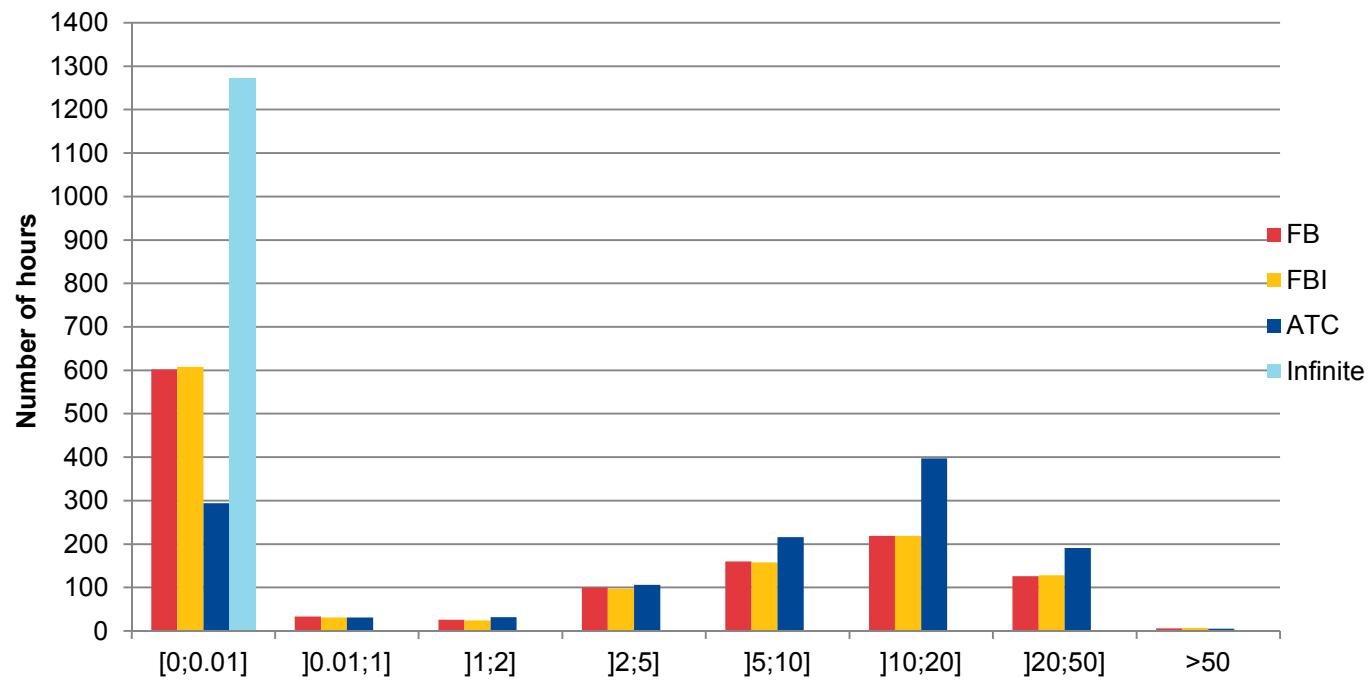


DAY AHEAD MARKET WELFARE

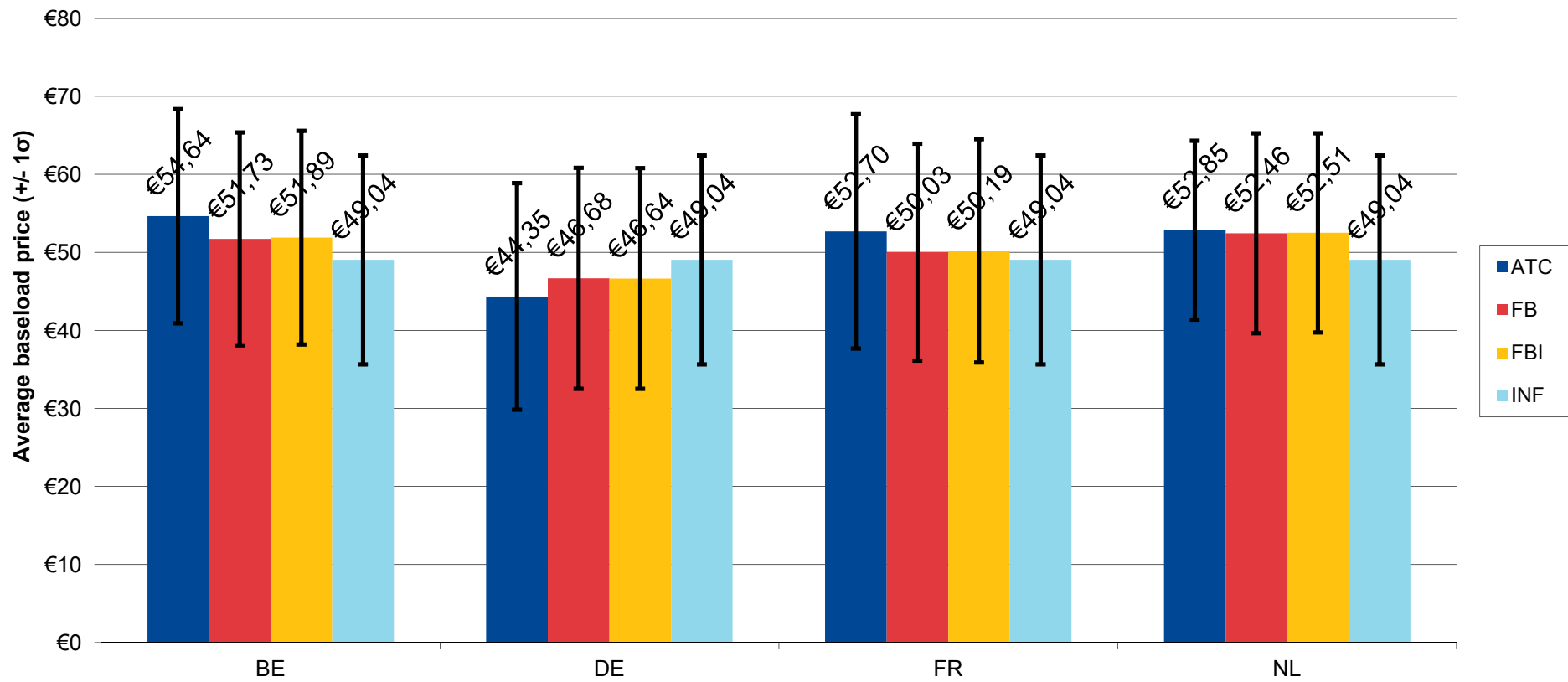
Welfare distribution breakdown



PRICE CONVERGENCE

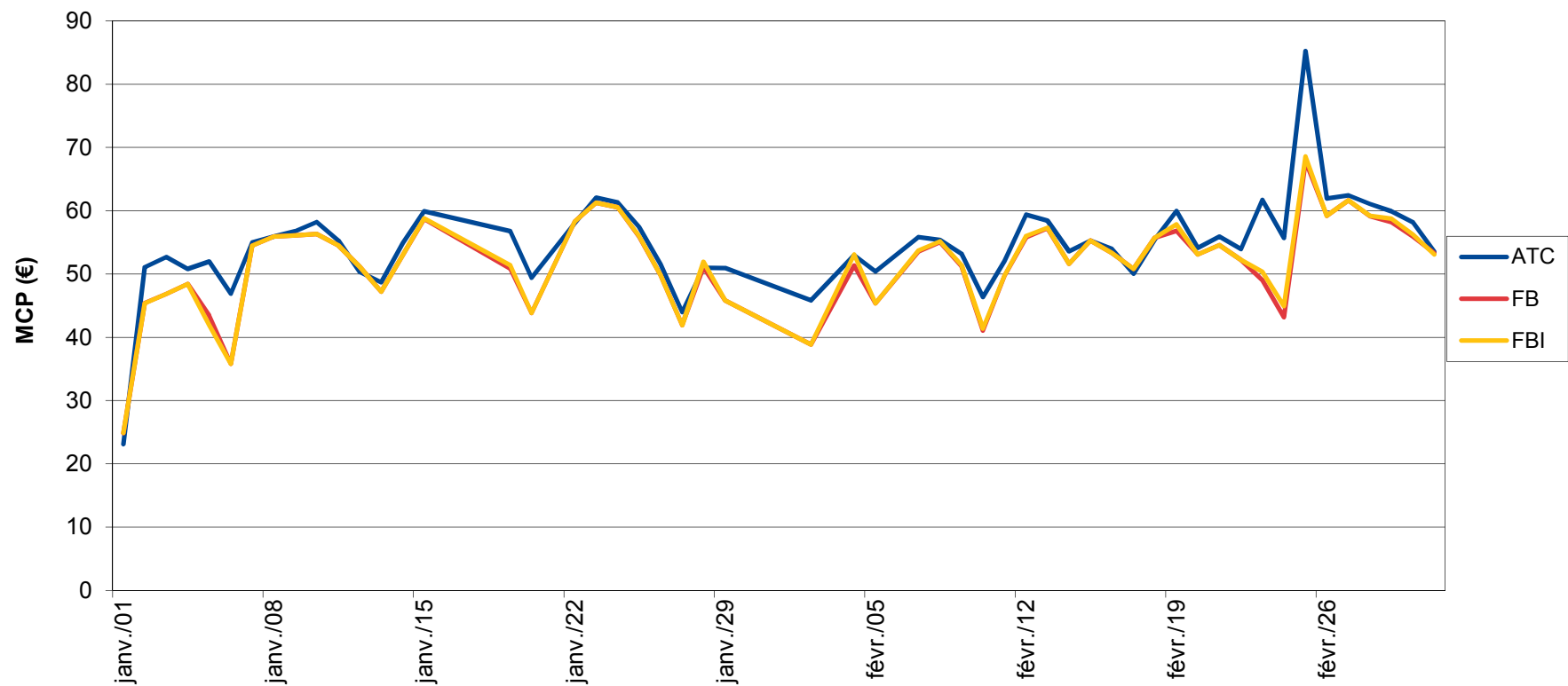


AVERAGE BASELOAD PRICE



AVERAGE BASELOAD PRICE

BELGIUM



Next Steps

Fine-tuning of the external parallel run

Q&A Forum, FB Users Group, Public Survey

Preparation of the regulatory approval package