

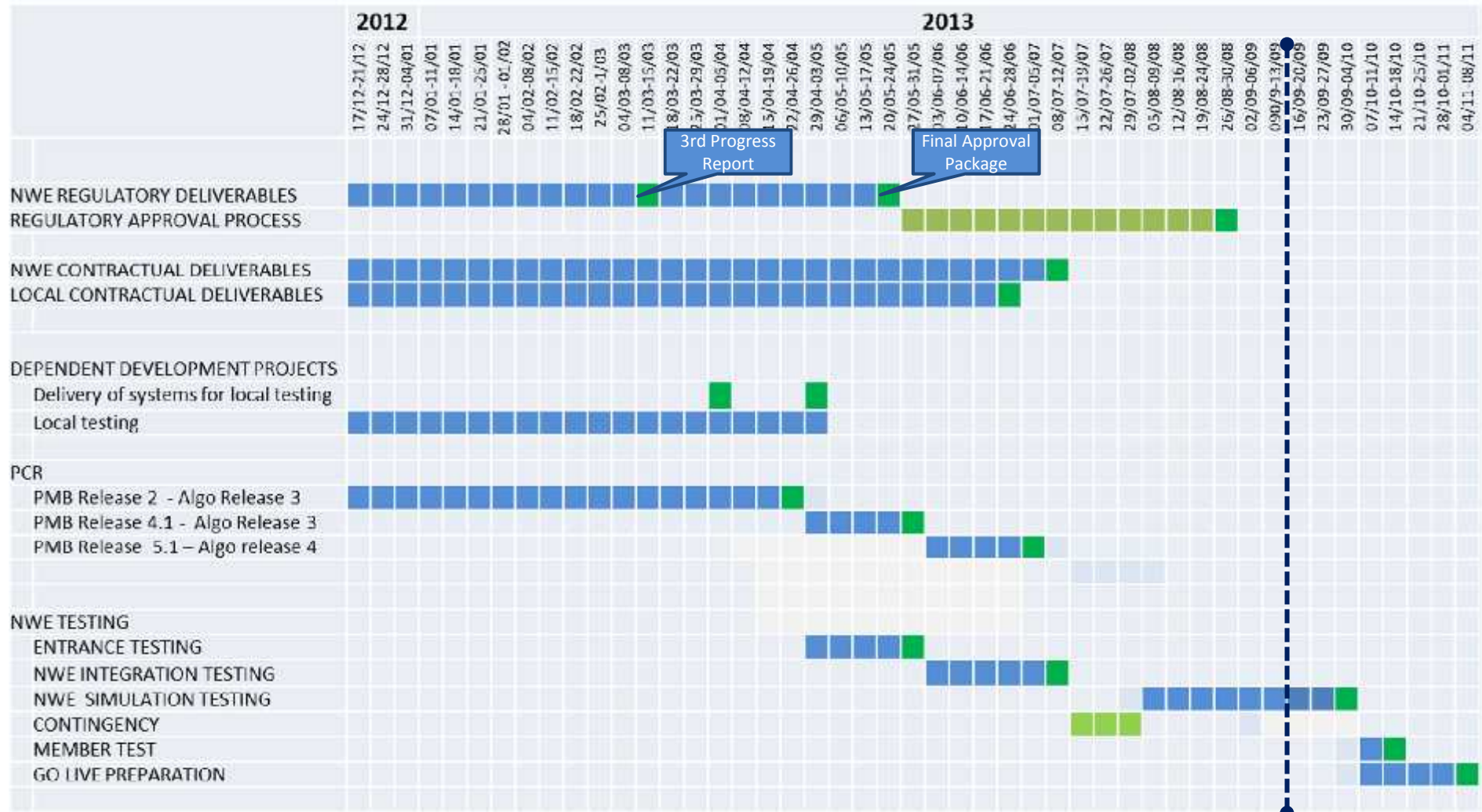


Status NWE Day Ahead Project

European Market Design Working Group
September 16th 2013



NWE DA – Planning Overview



Regulatory Approval Elia

August 22nd : CREG draft decision “afkeuring maar kan haar beslissing herzien onder voorwaarden” :

- Expects a proposal for a market coupling in the CWE region based on the flows
- To work on the internalisation of losses on a non-discriminatory way for both AC and DC interconnectors and internal lines and all relevant timeframes in cooperation with the other NWE project parties

Till September 16th : public consultation



NWE Price Coupling – Status of the testing until today



- Integration Testing phase finished
- Simulation testing has started since August 6th (35 Simulation test scripts)
- Member testing is being prepared (2 weeks starting from 14/10)

Date	Simulation
Monday, October 14	Normal Day
Tuesday, October 15	2nd auction triggering in CWE / GB
Wednesday, October 16	Full decoupling of NWE
Thursday, October 17	Partial Coupling 1 (Nordic-Baltic area will be decoupled from the CWE and GB area. CWE and GB remain coupled.)
Friday, October 18	No testing
Monday, October 21	Partial Coupling 2 (Internal CWE).
Tuesday, October 22	Full decoupling of NWE
Wednesday, October 23	test of market participants choice
Thursday, October 24	test of market participants choice
Friday, October 25	No testing

Registration till Monday 30 September

NWE price cap harmonisation

NWE price cap harmonization was investigated, finalized and approved.

- Min. price cap : - 500 €/MWh
- Max. price cap : + 3000 €/MWh

- Moment of implementation of the price caps under discussion
(probably at Go-live)

- Price thresholds for CWE and GB remain the same.
 - CWE: - 150 EUR/MWh, + 500 EUR/MWh
 - GB: -150 GBP/MWh, +500 GBP/MW

Planning : go-live still foreseen in November

CWE Forum (Timeslot for NWE) : October 10th

Information sessions Elia/Belpex : October 15th
(similar session Tennet/APX : 14/10)